

venturi **UK**

Aluminum entrance doors





venturi **UK**



Guarantee
5 years on door *
10 years for
the coating

The advantages of our doors:

- + solid and long-lasting construction,
- + timeless design,
- + excellent technical properties, ensuring high thermal insulation and acoustic comfort,
- + a wide range of colours and surface finishes,
- + a large variety of accessories,
- + the possibility of individual door design,
- + comfort and safety of use for a long period of time.

* details available in the warranty card

Contents

4	Standard equipment
6	Door models
22	Pivot doors
23	Technical doors
24	Surfaces texture
25	Wood effect finishes
26	Glass
27	Side lights / top lights
28	Pull handles
32	Access control
33	Lever handles
34	Locks / electric door opener
36	Lock cylinders
37	Hinges
38	Other / door closers / kick plates
39	External rosettes extension



Standard equipment for entrance doors



1 system	Overlay panel, two-sided, depth 75 mm, Wicona Evo 75 system
2 lock	G-U SECURY MR2, 3-point bolt, stainless steel
3 hinges	DR. Hahn 3-piece roller hinges, 3 pcs, EV1 anode
4 lock cylinder	Euro cylinder BKS 88, 3 keys
5 pull-handle	Pull-handle P10 - 600mm, Ø 30mm, stainless steel
6 rosette	Round rosette, stainless steel
7 handle	Handle H1, stainless steel
8 glass	Safety glass, Triple glazed, warm frame
9 colour	RAL Colours, Surfaces finishes



4 Euro cylinder BKS 88, 3 keys

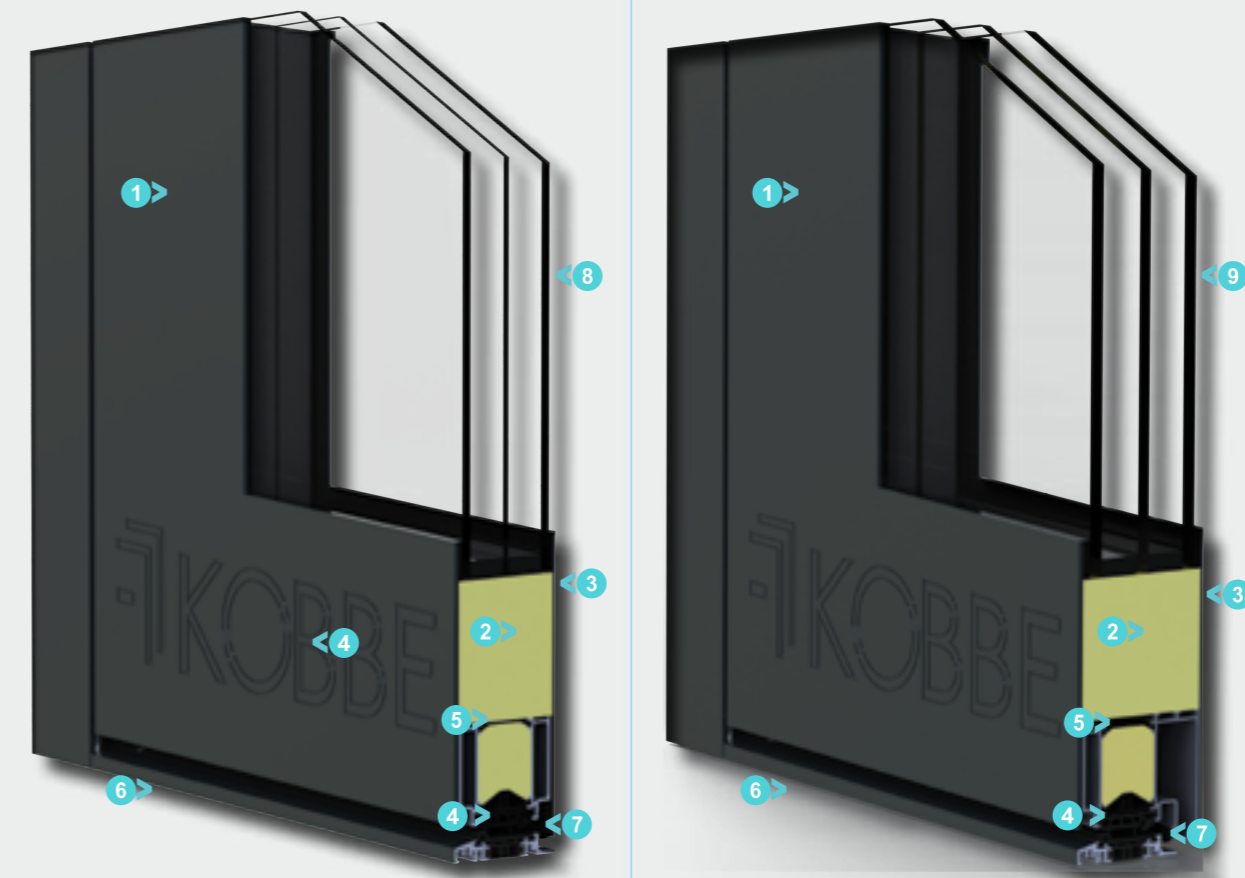
5 Pull-handle 600 mm Ø 30 mm stainless steel

6 Round rosette, flush with panel stainless steel

3 DR. Hahn 3-piece roller hinges, 3 pcs, EV1 anode

2 G-U SECURY MR2, 3-point bolt, stainless steel

Cross section



PREMIUM 75

U _d Permeability	from 0,95 W ² K
Door leaf/panel thicknes	75mm
Frame thicknes	75mm
Glass	64mm, Triple glazed inwards outwards
Opening direction	RC2 (optional)
Safety	

PRESTIGE 95

U _d Permeability	from 0,79 W ² K
Door leaf/panel thicknes	95mm
Frame thicknes	75mm
Glass	78mm, Triple glazed inwards
Opening direction	RC2 (optional)
Safety	

1	3mm thick aluminium outer face, EN AW 1050
2	Highly performance insulation core, 70mm
3	2mm thick aluminium inter face, EN AW 1050
4	EPDM gaskets - providing resistance to changing weather conditions, also to low and high temperatures, resistant to aging, UV radiation and moisture.
5	A multi-chamber thermal break, guaranteeing high thermal parameters, minimizes the thermal bridge effect
6	Low level, thermally broken access threshold
7	Cover gasket, which insulates thermally and acoustically - minimizes the escape of heat from the house
8	Safety glass, triple glazed 64 mm, low energy Ug- 0,5 W/m ² K, black warm edge spacer bar
9	Safety glass, triple glazed 84 mm, low energy Ug- 0,5 W/m ² K, black warm edge spacer bar



KB 100

colour Ral Structure (standard)
application Ral Structure (standard)
width 300mm
squares 50x50mm

Premium 75mm
Prestige 95mm



KB 110

colour Ral Structure (standard)
type of milling individual, simple
width 300mm

Premium 75mm
Prestige 95mm



KB 120

colour Ral Structure (standard)
type of milling individual, simple
width 300mm

Premium 75mm
Prestige 95mm



KB 130

colour Ral Struktura (standard)
type of milling simple 20mm

Premium 75mm
Prestige 95mm

presented models in dimension
1000 x 2100 mm | colour RAL 7016

standard door prices are valid for a maximum dimension 1300 x 2500 mm | standard
equipment (p. 4) any color from the RAL palette (page 24) | any glazing package (page 26)



KB 140

colour Ral Struktura (standard)
type of milling individual, simple
width 300mm

Premium 75mm
Prestige 95mm



KB 150

colour Ral Structure (standard)
type of milling simple 10mm
glass 100x100mm, 10pcs.

Premium 75mm
Prestige 95mm

standard door prices are valid for doors with a maximum dimension 1300 x 2500 mm | standard
equipment (p. 4) any color from the RAL palette (page 24) | any glazing package (page 26)



KB 160

colour Ral Structure (standard)
type of milling simple 10mm,
6pcs.

Premium 75mm
Prestige 95mm



KB 170

colour Ral Structure (standard)
type of milling simple 5mm, 5szt.
glass 50x400mm, 4szt.

Premium 75mm
Prestige 95mm

presented models in dimension
1000 x 2100 mm | colour RAL 7016



KB 180

colour Ral Structure (standard)
 application Ral Structure (standard)
 width 300mm
 glass 150x150mm, 5pcs.

Premium 75mm
 Prestige 95mm



KB 190

colour Ral Structure (standard)
 application inox 80x250mm
 2pcs, flush with panel
 glass 80x1800mm*

* depends on the height of the door

Premium 75mm
 Prestige 95mm



KB 200

colour Ral Structure (standard)

Premium 75mm
 Prestige 95mm



KB 210

colour Ral Structure (standard)
 application Ral Structure (standard)
 width 300mm

Premium 75mm
 Prestige 95mm

prices are valid for doors with a maximum dimension 1300 x 2500 mm | standard equipment (p. 4)
 any color from the RAL palette (page 24) | any glazing package (page 26)

presented models in dimension 1000 x 2100 mm | colour RAL 7016



KB 220

colour Ral Structure (standard)
 glass 150x1500mm

Premium 75mm
 Prestige 95mm



KB 230

colour Ral Structure (standard)
 type of milling simple 10mm, 6pcs.
 glass 80x1500mm

Premium 75mm
 Prestige 95mm



KB 240

colour Ral Structure (standard)
 type of milling simple 10mm, 12pcs.
 glass 150x1500mm, 5pcs.

Premium 75mm
 Prestige 95mm



KB 250

colour Ral Structure (standard)
 type of milling simple 10mm, 6pcs.
 glass 400x80mm, 6pcs.

Premium 75mm
 Prestige 95mm

prices are valid for doors with a maximum dimension 1300 x 2500 mm | standard equipment (p. 4)
 any color from the RAL palette (page 24) | any glazing package (page 26)

presented models in dimension 1000 x 2100 mm | colour RAL 7016



KB 260

colour Ral Structure (standard)
 application Ral Structure (standard)
 width 300mm
 glass 100x1500mm
 application inox 10mm, 4pcs.
 flush with panel

Premium 75mm
 Prestige 95mm



KB 270

colour Ral Structure (standard)
 application Ral Structure (standard)
 height 200mm
 application inox 10mm, 4pcs.
 flush with panel

Premium 75mm
 Prestige 95mm



KB 280

colour Ral Structure (standard)
 application Ral Structure (standard)
 width 300mm
 glass 300x30mm, 5pcs.
 application inox 30mm, 5pcs.
 flush with panel

Premium 75mm
 Prestige 95mm



KB 290

colour Ral Structure (standard)
 application inox 10mm, 4pcs.
 flush with panel

Premium 75mm
 Prestige 95mm

standard door prices are valid for doors with a maximum dimension 1300 x 2500 mm | standard equipment (p. 4) any color from the RAL palette (page 24) | any glazing package (page 26)

presented models in dimension 1000 x 2100 mm | colour RAL 7016



KB 300

colour Ral Structure (standard)
 application inox 10mm, 6pcs.
 flush with panel

Premium 75mm
 Prestige 95mm



KB 310

colour Ral Structure (standard)
 glass 120x1500mm
 application inox 10mm, 8pcs.
 flush with panel

Premium 75mm
 Prestige 95mm



KB 320

colour Ral Structure (standard)
 type of milling simple 10mm, 4pcs.
 225x560mm*

Premium 75mm
 Prestige 95mm



KB 330

colour Ral Structure (standard)
 glass 210x210mm, 4pcs.
 application inox 250x250mm
 20mm width, 4pcs.
 flush with panel

Premium 75mm
 Prestige 95mm

standard door prices are valid for doors with a maximum dimension 1300 x 2500 mm | standard equipment (p. 4) any color from the RAL palette (page 24) | any glazing package (page 26)

presented models in dimension 1000 x 2100 mm | colour RAL 7016



KB 340

colour Ral Structure (standard)
 type of milling simple
 width 390mm
 height 1800mm*

* depends on the height of the door

Premium 75mm
 Prestige 95mm



KB 350

colour Ral Structure (standard)
 glass 150x1500mm
 application inox frame 40mm
 flush with panel

Premium 75mm
 Prestige 95mm



KB 360

colour Ral Structure (standard)
 type of milling simple 10mm, 6pcs.
 glass 250x1300mm

Premium 75mm
 Prestige 95mm



KB 370

colour Ral Structure (standard)
 application Ral Structure (standard)
 width 300mm
 type of milling simple 10mm, 5pcs.
 glass 150x1400mm
 application inox frame 10mm
 flush with panel

Premium 75mm
 Prestige 95mm

presented models in dimension
 1000 x 2100 mm | colour RAL 7016

standard door prices are valid for doors with a maximum dimension 1300 x 2500 mm | standard
 equipment (p. 4) any color from the RAL palette (page 24) | any glazing package (page 26)



KB 380

colour Ral Structure (standard)
 type of milling simple 10mm, 5pcs.
 glass 200x1400mm
 application inox frame 10mm
 flush with panel

Premium 75mm
 Prestige 95mm

standard door prices are valid for doors with a maximum dimension 1300 x 2500 mm | standard
 equipment (p. 4) any color from the RAL palette (page 24) | any glazing package (page 26)



KB 390

colour Ral Structure (standard)
 glass Ø250mm
 application inox Ø300mm
 flush with panel

Premium 75mm
 Prestige 95mm



KB 400

colour Ral Structure (standard)
 glass 500x1800mm

Premium 75mm
 Prestige 95mm



KB 410

colour Ral Structure (standard)
 glass 300x1800mm

Premium 75mm
 Prestige 95mm

presented models in dimension
 1000 x 2100 mm | colour RAL 7016



KB 420

colour Ral Structure (standard)
glass 200x1800mm

Premium 75mm
Prestige 95mm



KB 430

colour Ral Structure (standard)
glass 200x1600mm

Premium 75mm
Prestige 95mm



KB 440

colour Ral Structure (standard)
type of milling simple 10mm, 6pcs.
glass 250x1300mm

Premium 75mm
Prestige 95mm



KB 450

colour Ral Structure (standard)
glass 200x1500mm
application inox 10mm, 7pcs.
flush with panel

Premium 75mm
Prestige 95mm

presented models in dimension
1000 x 2100 mm | colour RAL 7016

standard door prices are valid for doors with a maximum dimension 1300 x 2500 mm | standard
equipment (p. 4) any color from the RAL palette (page 24) | any glazing package (page 26)



KB 460

colour Ral Structure (standard)
type of milling simple 10mm, 7pcs.
glass 450x60mm, 7pcs.
application inox 60mm, 7pcs.
flush with panel

Premium 75mm
Prestige 95mm



KB 470

colour Ral Structure (standard)
glass 400x80mm, 4pcs.
application inox 10mm, 9pcs.
flush with panel

Premium 75mm
Prestige 95mm



KB 480

colour Ral Structure (standard)
type of milling simple 10mm, 4pcs.
glass 200x1500mm

Premium 75mm
Prestige 95mm



KB 490

colour Ral Structure (standard)
glass 200x80mm, 5pcs.
application inox 80mm, 5pcs.
flush with panel

Premium 75mm
Prestige 95mm

presented models in dimension
1000 x 2100 mm | colour RAL 7016

standard door prices are valid for doors with a maximum dimension 1300 x 2500 mm | standard
equipment (p. 4) any color from the RAL palette (page 24) | any glazing package (page 26)



KB 500

colour Ral Structure (standard)
 glass 150x1800mm
 application inox 10mm, 10pcs.
 flush with panel

Premium 75mm
 Prestige 95mm



KB 510

colour Ral Structure (standard)
 glass 180x480mm, 2pcs.
 application inox 50mm, 3pcs.
 frame 10mm, 2pcs.
 flush with panel

Premium 75mm
 Prestige 95mm



KB 520

colour Ral Structure (standard)
 type of milling simple 10mm, 3pcs.
 glass 200x1800mm
 application inox 200mm, 2pcs.
 flush with panel

Premium 75mm
 Prestige 95mm



KB 530

colour Ral Structure (standard)
 type of milling type "v" 10mm, 9pcs.

Premium 75mm
 Prestige 95mm

standard door prices are valid for doors with a maximum dimension 1300 x 2500 mm | standard equipment (p. 4) any color from the RAL palette (page 24) | any glazing package (page 26)

presented models in dimension 1000 x 2100 mm | colour RAL 7016



KB 540

colour Ral Structure (standard)
 type of milling simple 10mm, 6pcs.
 glass 200x1800mm

Premium 75mm
 Prestige 95mm



KB 550

colour Ral Structure (standard)
 application inox 10mm, 9pcs.
 flush with panel

Premium 75mm
 Prestige 95mm



KB 560

colour Ral Structure (standard)
 type of milling simple individual
 glass 250x530mm, 2pcs.

Premium 75mm
 Prestige 95mm



KB 570

colour Ral Structure (standard)
 type of milling simple 10mm, 7pcs.
 glass 300x300mm, 3pcs.

Premium 75mm
 Prestige 95mm

standard door prices are valid for doors with a maximum dimension 1300 x 2500 mm | standard equipment (p. 4) any color from the RAL palette (page 24) | any glazing package (page 26)

presented models in dimension 1000 x 2100 mm | colour RAL 7016



KB 580

colour Ral Structure (standard)
 glass 400x200mm, 4pcs.
 application inox 10mm, 2pcs.
 flush with panel

Premium 75mm
 Prestige 95mm



KB 590

colour Ral Structure (standard)
 type of milling simple 10mm, 6pcs.
 glass 150x1700mm,

Premium 75mm
 Prestige 95mm



KB 600

colour Ral Structure (standard)
 type of milling simple 10mm, 9pcs.

Premium 75mm
 Prestige 95mm



KB 610

colour Ral Structure (standard)
 glass 300x1600mm
 application inox frame 400mm
 10mm, 4pcs.
 flush with panel

Premium 75mm
 Prestige 95mm

standard door prices are valid for doors with a maximum dimension 1300 x 2500 mm | standard equipment (p. 4) any color from the RAL palette (page 24) | any glazing package (page 26)

presented models in dimension 1000 x 2100 mm | colour RAL 7016



KB 620

colour Ral Structure (standard)
 glass 80x1400mm
 application inox 10mm, 2pcs.
 flush with panel

Premium 75mm
 Prestige 95mm



KB 630

colour Ral Structure (standard)
 glass 200x300mm, 3szt.
 application inox frame 10mm, 3pcs.
 flush with panel

Premium 75mm
 Prestige 95mm

standard door prices are valid for doors with a maximum dimension 1300 x 2500 mm | standard equipment (p. 4) standard door prices are valid for double doors with a maximum dimension 2600x2500 mm | standard equipment (p. 4) any color from the RAL palette (page 24) | any glazing package (page 26)



KB 540 Double doors

colour Ral Structure (standard)
 type of milling simple 10mm, 6szt. x2
 glass 200x1800mm x2
 model any KB model

Premium 75mm
 Prestige 95mm

presented models in dimension 1000 x 2100 mm | colour RAL 7016 double doors 2000 x 2100 mm | colour RAL 7016



KB 1000

colour Ral Structure (standard)
Glass Ral 9005
glass width 300mm
window 100x1500mm
aplikacje inox 10mm, 4pcs.
flush with panel
pull-handle Livello 350

Premium+ 78mm



KB 1010

colour Ral Structure (standard)
Szkło Ral 9005
glass width 200mm
window 100x1400mm
aplikacje inox 10mm, 4szt.
flush with panel

Premium+ 78mm



KB 1020

colour Ral Structure (standard)
Szkło Ral 9005
glass szerokość 150mm
window 80x1500mm
type of milling simple 10mm, 4pcs.

Premium+ 78mm



KB 1030

colour Ral Structure (standard)
Glass Ral 9005
glass width 400mm
window 300x1700mm
type of milling simple 10mm, 4pcs.
pull-handle Q90 40x20 horizontal

Premium+ 78mm

standard door prices are valid for doors with a maximum dimension 1300 x 2500 mm | standard equipment (p. 4) any color from the RAL palette (page 24) | individual glazing package, Black glass or Mirrastar (page 26)

presented models in dimension 1000 x 2100 mm | colour RAL 7016 | black glass



KB 1040

colour Ral Structure (standard)
Glass Ral 9005
glass width 200mm
window 100x1400mm
type of milling type "V" 10mm

Premium+ 78mm



KB 1050

colour Ral Structure (standard)
Glass Ral 9005
glass width 400mm
window 200x1500mm

Premium+ 78mm

**PREMIUM+**

U_g Permeability od 0,93 W²K
Door leaf/panel thicknes 78mm
Frame thicknes 78mm
Glass 72mm, Triple glazed with step inwards
Opening direction outwards (only conlead hinge)
Safety RC2 (optional)*

presented models in dimension 1000 x 2100 mm | colour RAL 7016 | black glass

standard door prices are valid for doors with a maximum dimension 1300 x 2500 mm | standard equipment (p. 4) any color from the RAL palette (page 24) | individual glazing package, Black glass or Mirrastar (page 26)

Pivot Doors



PIVOT PREMIUM | PREMIUM+

	PREMIUM	PREMIUM+
Door leaf/panel thickness	75mm	78mm
Frame thickness	75mm	78mm
Glass	64mm, Triple glazed (PREMIUM) 72mm, Triple glazed with step (PREMIUM+)	
Opening direction	inwards outwards	
Safety	RC2 (optional)	

Pivot Doors -

- this is a unique approach to the front door, thanks to the shifted axis of the sash, we can create very large structures with any door panel. The system provides high thermal insulation, tightness and easy opening. Pivot doors are available with the full range of fittings and accessories. In addition, we have the option of adding side and top skylights, creating even more spectacular entrance structures.

standard door prices are valid for doors with a maximum dimension 1500 mm x 3000mm, maximum weight of the door leaf 500 kg

presented models in dimension 1300 x 2500 mm | colour RAL 7016



KB TECH 1

kolor szyba Ral Struktura (standard)
pakiet 3 szybowy 44mm

Tech 75mm



KB TECH 2

kolor szyba Ral Struktura (standard)
panel pakiet 3 szybowy 44mm
44mm

Tech 75mm



KB TECH 3

kolor panel Ral Struktura (standard)
44mm

Tech 75mm

technical doors

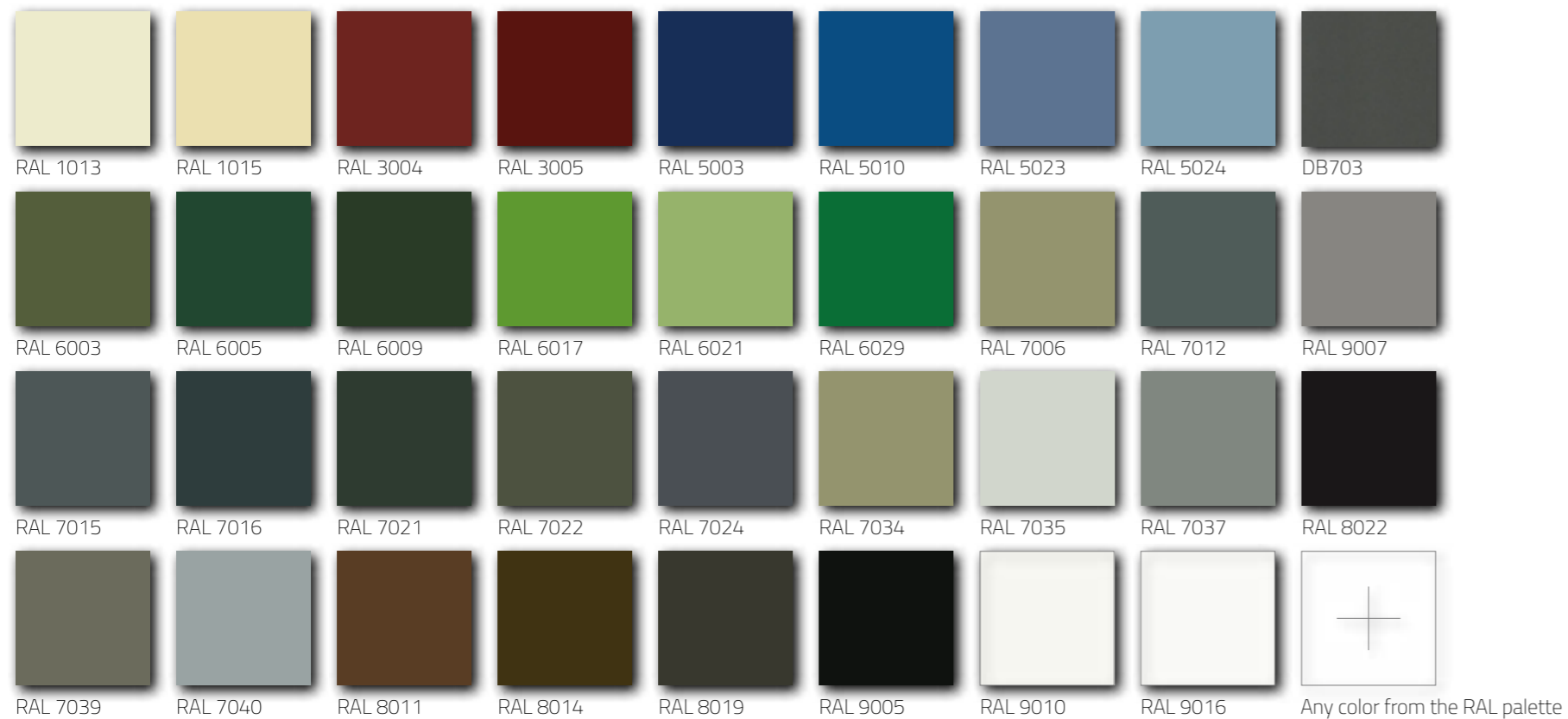
- it is an external door with high thermal insulation, available in 3 variants with glass, panel or glass / panel version.
- Basic equipment:
 - single lock made of stainless steel
 - DR 3-part roller hinges. Hahn 3pcs, Anode EV1
 - BKS Series 88 cylinder with emergency function
 - H1 double-sided handle, stainless steel
 - any of the structural or matt colors (page 24)
 - safety glass, 2-chamber 44mm package
 - warm frame in black,
 - 44mm solid panel.



standard door prices are valid for doors with a maximum dimension 1300 x 2500 mm | dedicated equipment technical doors any color from the RAL palette (page 24) | any glazing package or panel 44mm

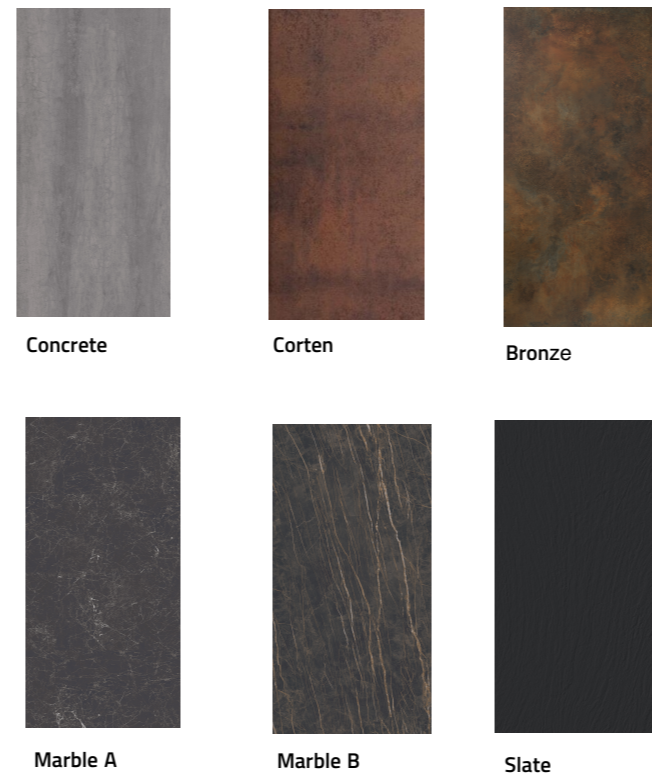
presented models in dimension 1000 x 2100 mm | colour RAL 7016

Paint finishes



Bi-Color coating
(single doors without sidelights)

Special finishes



All special finishes
(single doors without sidelights)

Wood effect finishes



Glass

A Transparent glass

B Antisol | Stopsol grey

B Antisol | Stopsol green

B Antisol | Stopsol brown

B Decormat glass

B Planibel dark Grey

C Sandblasted glass

C Sandblasted glass | pattern

C Mirrastar

B Master-carre

B Master-point

B Flutes

B Chinchila

B Crepi

B Kura

Types of glass

- GROUP A** Transparent glass
- GROUP B** Decormat glass
Antisol glass
Stopsol glass
Ornamental glass
Planibel dark Grey
- GROUP C** Mirrastar
Sandblasted glass | pattern

Type of construction



Side lights

width	glass – group A	glass – group B	glass – group C
400 mm			
600 mm			
800 mm			
1000 mm			
1200 mm			
1400 mm			

*Side lights price include RAL coating (p. 24)
* assumed height 2100mm

Top lights

width x height	glass – group A	glass – group B	glass – group C
1200 x 400 mm			
1700 x 400 mm			
2200 x 400 mm			
1200 x 600 mm			
1700 x 600 mm			
2200 x 600 mm			
1200 x 800 mm			
1700 x 800 mm			
2200 x 800 mm			

*Side lights price include RAL coating (p. 24)

Wood-effect finishes
Bi-Color coating (only RAL)



Pull-handle



P10

Q10



PA10

QA10



P10

Ø 30mm, Ø 40mm**, stainless steel

Lenght	Symbol	Extra charge lenght	Extra charge LED backlight*
600 mm	P10.60		
800 mm	P10.80		
1000 mm	P10.100		
1200 mm	P10.120		
1400 mm	P10.140		
1600 mm	P10.160		
1800 mm	P10.180**		
2000 mm	P10.200**		



LED Light



ekey dLine

* For LED backlight please add cable transition KB 1.96 (p. 40)



Q10

40 x 20 mm, stainless steel

Lenght	Symbol	Extra charge lenght	Extra charge LED backlight*
600 mm	Q10.60		
800 mm	Q10.80		
1000 mm	Q10.100		
1200 mm	Q10.120		
1400 mm	Q10.140		
1600 mm	Q10.160		
1800 mm	Q10.180		
2000 mm	Q10.200		



LED Light



ekey dLine

* For LED backlight please add cable transition KB 1.96 (p. 40)



PA10

Ø 30mm, Ø40 mm**, aaluminium, black

Lenght	Symbol	Extra charge lenght	Extra charge LED backlight*
600 mm	PA10.60		
800 mm	PA10.80		
1000 mm	PA10.100		
1200 mm	PA10.120		
1400 mm	PA10.140		
1600 mm	PA10.160		
1800 mm	PA10.180**		
2000 mm	PA10.200**		



LED Light



ekey dLine

* For LED backlight please add cable transition KB 1.96 (p. 40)



QA10

40 x 20 mm, aluminium, black

Lenght	Symbol	Extra charge lenght	Extra charge LED backlight*
600 mm	QA10.60		
800 mm	QA10.80		
1000 mm	QA10.100		
1200 mm	QA10.120		
1400 mm	QA10.140		
1600 mm	QA10.160		
1800 mm	QA10.180		
2000 mm	QA10.200		



LED Light



ekey dLine

* For LED backlight please add cable transition KB 1.96 (p. 40)



Q90

40 x 40 mm, stainless steel

Lenght	Symbol	Extra charge lenght	Extra charge LED backlight*
600 mm	Q90.60		
800 mm	Q90.80		
1000 mm	Q90.100		
1200 mm	Q90.120		
1400 mm	Q90.140		
1600 mm	Q90.160		
1800 mm	Q90.180		
2000 mm	Q90.200		



LED
Light



ekey
dLine

* For LED backlight please add
cable transition KB 1.96 (p. 40)

QA90

40 x 40 mm, aluminium, black

Lenght	Symbol	Extra charge lenght	Extra charge LED backlight*
600 mm	QA90.60		
800 mm	QA90.80		
1000 mm	QA90.100		
1200 mm	QA90.120		
1400 mm	QA90.140		
1600 mm	QA90.160		
1800 mm	QA90.180		
2000 mm	QA90.200		



LED
Light



ekey
dLine

* For LED backlight please add
cable transition KB 1.96 (p. 40)

QA90



Q90 P

40 x 20 mm, horizontal, stainless steel

Lenght	Symbol	Extra charge lenght
700 mm	Q90.70 Horizontal, door width 1100mm	
800 mm	Q90.80 Horizontal, door width 1200mm	
900 mm	Q90.90 Horizontal, door width over 1200mm	



LED
Light



ekey
dLine

* Dedicated to the model KB1030 as a standard, no extra charge
* Option LED and ekey dLine fingerprint access control on request
* For LED backlight please add cable transition KB 1.96 (p. 40)

QA90 P

40 x 20 mm, horizontal, aluminium, black

Długość	Symbol	Extra charge lenght
700 mm	QA90.70 Horizontal, door width 1100mm	
800 mm	QA90.80 Horizontal, door width 1200mm	
900 mm	QA90.90 Horizontal, door width over 1200mm	



LED
Light



ekey
dLine

* Dedicated to the model KB1030 as a standard, no extra charge
* Option LED and ekey dLine fingerprint access control on request
* For LED backlight please add cable transition KB 1.96 (p. 40)

LIVELLO

350 x 60 mm, horizontal, stainless steel

Długość	Symbol	Extra charge lenght
350 mm	LIVELLO (350 x 60 mm)	

* Dedicated to the model KB1000 as a standard, no extra charge



W10.180 LED - Pull-handle W10 - 1800mm,
Recessed handrail with LED light, Aluminum

W10 recessed pull-handle

any color from the RAL palette (page 24)
optionally with LED light, Aluminum

Lenght	Symbol	Extra charge lenght
1800 mm	W10.180	
1800 mm	Extra charge LED backlight	

Interior door handles

Symbol	Description	Extra charge
KB 1.60	Handle H1, stainless steel	
KB 1.60 B	Handle H1, black	
KB 1.61	Handle H2, stainless steel	
KB 1.61 B	Handle H2, black	
KB 1.62	Handle H3, stainless steel	
KB 1.62 B	Handle H3, black	

* any external handle without extra charges



KB 1.60 Handle H1, stainless steel KB 1.61 Handle H2, stainless steel KB 1.62 Handle H3, stainless steel

KB 1.60 Handle H1, black KB 1.61 Handle H2, black KB 1.62 Handle H3, black

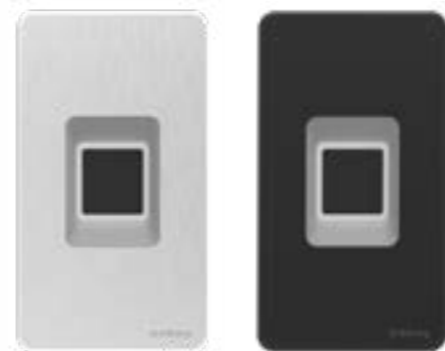
Access control



KB 3.10 ekey dLine in door panel, stainless steel
Management of the ekey dLine reader with the ekey bionyx app



aluminum doors



KB 3.10, stainless steel | black

aluminum doors



KB 3.12 ekey keypad Integra
stainless steel | anthracite | white

Access control

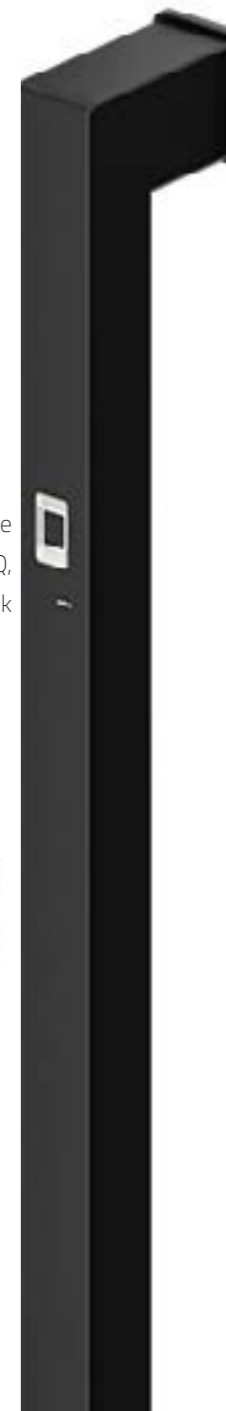
Symbol	Description	Extra charge
KB 3.10*	ekey dLine in panel, stainless steel	
KB 3.10 B*	ekey dLine in panel, black	
KB 3.11*	ekey dLine in Pull-handle Series Q, stainless steel	
KB 3.11 B*	ekey dLine in Pull-handle Series Q, black	
KB 3.11*	ekey dLine in Pull-handle Series P, stainless steel	
KB 3.12*	ekey keypad Integra in panel ,stainless steel anthracite white	
KB 3.20*	Microswitch, single function	
KB 3.21*	Touch sensor, single function	

* ekey dLine not available for PA10 Pull-handles

KB 3.11 ekey dLine
Pull-handle Series P,
stainless steel



KB 3.11 ekey dLine
Pull-handle Series Q,
black



KB 3.11 ekey dLine
Pull-handle Series Q,
stainless steel



GU-SECURITY Locks

G.U-SECURY Automatic

Simply allows the door to close. As soon as the door is closed shut the latchbolt automatically throws preventing the latch from being forced back.

G.U-SECURY Automatic-DR

Includes double reliable automatic security deadbolt being a combination of GU automatic and hook lock. All locking elements throw automatically after closing the doors.

G.U-SECURY Automatic 6

Six locking points automatically lock the door. Significantly increased anti-burglary protection.

G.U-SECURY Automatic TE

Automatic TE system enables you to manually override the automatic locking function so the door is released during the day. Possible opening doors from outside without using the key.

G.U-SECURY MR

Massive bolt (MR) system provides you with a multi-point lock which is protected from being sawn through or forced back – with two or four MR bolts depending on the requirements.

G.U-SECURY DR

The GU security DR multi-point lock has the benefits of the SH bolt (security hooks) and MR bolts (massive bolts) into one double bolt.

Locks

Symbol	Description	Extra charge
KB 4.10	G-U MR2, 3 point lock , Stainless steel	
KB 4.11	G-U MR2, 3 point lock + security solid chain guard T-catch, Stainless steel	
KB 4.12	G-U DR, 5 point lock , Stainless steel	
KB 4.20	G-U Automatic 3, Automatic 3 point lock, stainless steel	
KB 4.21	G-U Automatic 3 TE, automatic 3 point lock with "day function", stainless steel	
KB 4.22*	G-U Automatic 3, automatic 3 point lock + A-motor, stainless steel	
KB 4.23	G-U Automatic 3, automatic 3 point lock + security solid chain guard T-catch, stainless steel	
KB 4.24*	G-U Automatic 3, automatic 3 point lock + A-motor + security solid chain guard T-catch, stainless steel	
KB 4.30	G-U Automatic DR, automatic 5 point lock, stainless steel	
KB 4.31*	G-U Automatic ADR, automatic 5 point lock + A-motor, stainless steel	
KB 4.40	G-U Automatic A6, Automatic 7point lock, stainless steel	
KB 4.41*	G-U Automatic A6, automatic 7 point lock + A-motor, stainless steel	

* For locks wit A-motor please add cable transition KB 1.96 (page 40)

Electric strike

Symbol	Description	Extra charge
KB 1.20*	Day/night function	
KB 1.21*	Electric strike	



KB 1.20



KB 1.21

* Locks G-U MR2, G-U DR



Solid chain guard – T-catch
integrated solid chain system with thumbturn release

G-U MR2, G-U Automatic

Massive bolt,
made from reinforced steel,
guarantee increased security

GU MR2

Double bolt
two sets of massive bolts and
saw-through hooks in one bolt.
Locking top and bottom door sash

GU DR

Automatic latchbolt
integrated latchbolt allowed for
automatically throw 20mm and
prevent them being forced back.

GU Automatic 3

Automatic latchbolt + hookbolt
automatic and double locking system guarantee
highest security and double burglar protection

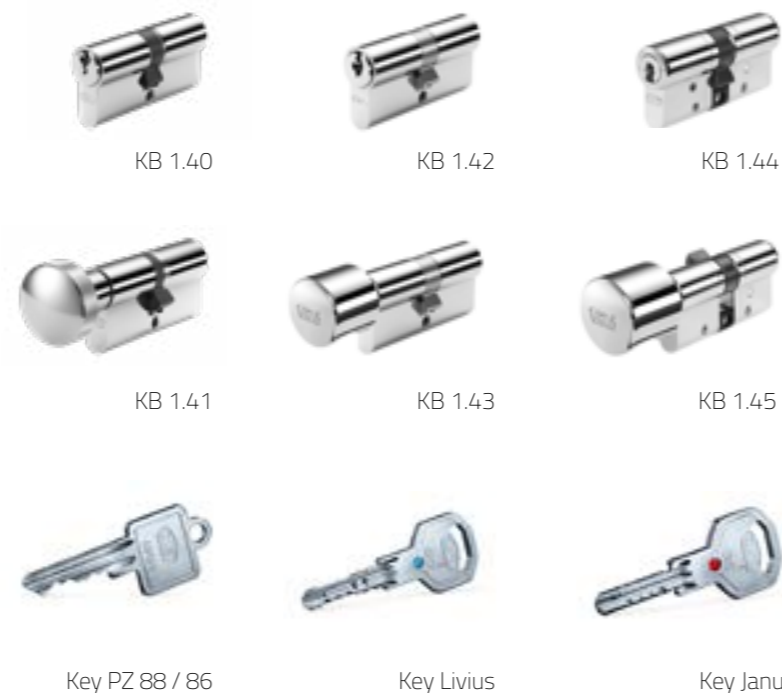
GU Automatic-DR

Automatic double latchbolt
integrated latchbolt allowed for
automatically throw 20mm and
prevent them being forced backrt.

GU Automatic 6

Lock cylinder

Symbol	Description	Extra charge (Premium 75mm)	Extra charge (Prestige 95mm)
KB 1.40	Euro Cylinder BKS 88		
KB 1.41	Knob Cylinder BKS 86		
KB 1.42	Euro Cylinder Livius		
KB 1.43	Knob Cylinder Livius		
KB 1.44	Euro Cylinder Janus		
KB 1.45	Knob Cylinder Janus		
	Extra key BKS 88/86		
	Extra key Livius		
	Extra key Janus		



Meets the requirements of the BM TRADA Q-Mark Enhanced Security Door scheme PAS 24

Description	Extra charge
RC2 Set for single door	
RC2 Set for single door with sidelights	
+ extra charge for P4 safety glass	



KB 1.30

KB 1.30

KB 1.31

Hinges

Symbol	Description	Extra charge
KB 1.30	DR. Hahn 3-piece roller hinges, 3 pcs, EV1 anode	
KB 1.30R	DR. Hahn 3-piece roller hinges, 3 pcs, Colour	
KB 1.30I	DR. Hahn 3-piece roller hinges, 3 pcs, stainless steel	
KB 1.31	AXXENT - hidden hinge, 3 pieces, stainless steel	

Others

Symbol	Description	Extra charge
KB 1.91	Peephole classic	
KB 1.92	Digital Peephole	
KB 1.93	Digital Peephole with camera and bell	
KB 1.94	Security sensor	
KB 1.96*	Contact cable transition	

Door closers

Symbol	Description	Extra charge
KB 1.70	Hidden door closer DORMA ITS96	
KB 1.71	Door closer DORMA TS93 with rail and hold open unit, Anode EV1	

Kick plate

Symbol	Description	Extra charge
KB 1.80	80 mm plinth protection, flush with the panel	
KB 1.81	Plinth protection 30 mm, flush with the panel	



KB 1.91



KB 1.94



KB 1.92



KB 1.93



KB 1.96



KB 1.70



KB 1.71



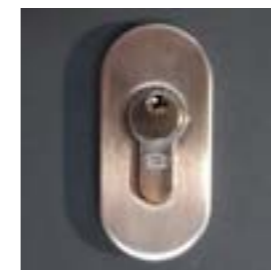
KB 1.80 | KB 1.81

External rosettes

Symbol	Description	Extra charge
KB 1.51	Round rosette, stainless steel	
KB 1.51B	Round rosette, black	
KB 1.52	Oval rosette, stainless steel	
KB 1.52B	Rozeta owalna, black	
KB 1.53	Round rosette with no scratch protection "square", stainless steel	



KB 1.51



KB 1.52



KB 1.53



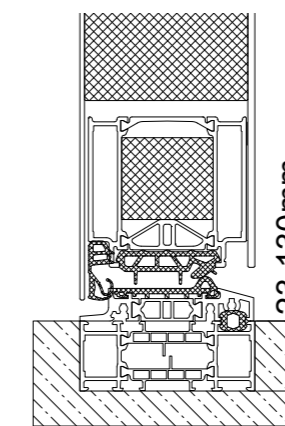
KB 1.51B



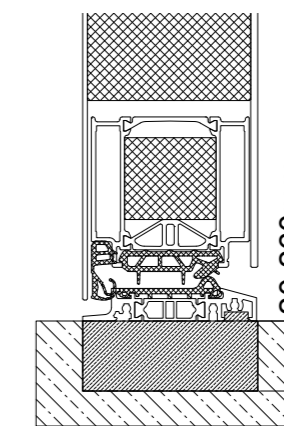
KB 1.52 B

System extensions

Height	RAL colours EUR / l.m.	Wood-like coatings EUR / l.m.
23mm		
30mm		
50mm		
90mm		
130mm		



System extensions



Mudsill

Mudsill

Symbol	Description	Extra charge
KB 2.20	20 mm	
KB 2.40	40 mm	
KB 2.60	60 mm	
KB 2.80	80 mm	
KB 2.100	100 mm	
KB 2.120	120 mm	
KB 2.140	140 mm	
KB 2.160	160 mm	
KB 2.180	180 mm	
KB 2.200	200 mm	
KB 2.220	220 mm	
KB 2.240	240 mm	
KB 2.260	260 mm	

* price for 1 pcs. lenght 1200mm
* for doors with sidelights, 2 pcs.

Additional technical and commercial information

BASIC INFORMATION

- The technological structure of the door is based on the WICONA system,
- The price of a given model of a single-leaf door is the same for each size within the range of max. 1300 mm width x max. 2500 mm height and for any RAL color (page 24),
- In the models with glazing, we can freely change the glazing package from the available ones (page 26) at no extra charge,
- Models can be modified, taking into account the customer's preferences (changing the type and arrangement of milling, moving elements left, right, up, down, changing the colors of the application, the possibility of engraving inscriptions and proposing your own pattern).

HARDWARE AND ACCESSORIES

- In the case of black glass on the lock side, model KB1000 only oval KB 1.52 stainless steel rosette or black,
- Motorized espagnolette doors are equipped with a power supply (24V) DIN,
- The doors with LED illumination in the handles are equipped with a power supply (12V) DIN,
- The cable transition in the door makes it possible to disconnect the leaf from the door by unscrewing 1 screw and disconnecting the plug,
- In the case of doors with electronics (drive, access control, LED, etc), we add the cable transition only once per door piece,
- LIVIUS and JANUS inserts are class C inserts and guarantee the highest level of protection against burglary,
- For acces controlls (ekey dLine), numeric keypads, microswitches any motorized lock is required (e.g. at least KB 4.22),
- As standard, we install a ekey dLine or a keyboard in the door at a height of 1550 mm from the level of the bottom door,, (In the case of installation in the handrail, the height depends on the length and type of the handrail),
- ekey dLine fingerprint acces control is not available in the Pull-handle PA10 black,
- In the case of aluminum Pull-handles (PA10, QA10) above the length of 1800, we use a third mounting foot,
- In the case of LED illumination, a cable transition must be added (KB 1.96 - p. 40),
- LED illumination in Pull-handles is continuous, whenever it gets voltage, white, cold or warm,
- The color of KB 1.30 R roller hinges is matched to the color of the frame.

PANEL and GLASS

- Milling in panels is available in 3 variants:
 - P - simple width 5mm | 10mm | 20mm, depth 1mm (standard),
 - V - type V, internal width 10mm, external width 12mm, depth 1mm, angle 45 °,
 - G - engraver, possibility of milling numbers, letters, individual patterns,
- Standard Inox applications with a width of 10mm,
- Wood-like colors without Inox application - V-cutter,
- Bi-Color for colors from the RAL palette, any color inside / outside for frame and sash (panel),
- For wood-like colors, Bi-Color is available only for the leaf (panel)

Free opening light of the structure depending on the type:

Construction type Door width	1000mm	1100mm	1200mm
Single door Width between frames	858 mm	958 mm	1058 mm
Single door one sidelight Width between post and frame	880 mm	980 mm	1080 mm
Single door two sidelights Width between posts	910 mm	1010 mm	1110 mm

ASSEMBLY, WARRANTY

- Detailed installation conditions can be found in the “door assembly manual”, please ask for a copy. We allow mounting with anchors and dowelling. In the case of dowelling, please indicate on the order that you want to prepare the holes - free of charge,
- Warranty - detailed warranty conditions available upon request!

UK Contact

venturi

www.venturiuk.com

T: 0800 980 0660
E: info@venturiuk.com

Photo (20) by

Bence Balla-Schottner on Unsplash

Photo (1,4,24) by

Alev Takil on Unsplash

design by
boomstudio.pl

